

Onshore Coiled Tubing Trailer

Details

- Control Cabin, Power-pack and workshop are mounted on a container chassis by use of conventional twist lock connections.
- The workshop is utilized with a client office for direct job control.
- Trailer includes all around walk ways for easy and safe access.
- Coiled Tubing Reel to be placed either on the location or by reel trailer in front of ct unit.



Engine

- Caterpillar 3406 DITA charged diesel engine with 490 BHP, Zone II and engine shutdown systems.
- Unit noise level tested according ISO 3746. Acoustic enclosure level rated for 85 dBA.
- The engine has a 5000 psi hydraulic capacity.
- Zone II ATEX Cat 3 IIA T3 certification.
- 5000 psi hydraulic system.

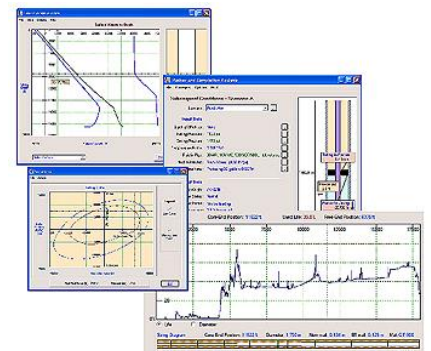


Operator Cabin

- Air-conditioned large interior with captains-chair and working desk.
- Elevated cabin for maximum visibility.
- Data Acquisition with Orion Net.
- Real Time Cerberus Modeling Software.
- Analogue speed & tension control for smooth drive of Reel & injector head.

Certification

- ATEX Cat3 IIA T3
- DNV 2.7-1
- EN12079
- SI 239
- SI 289



WSG[®]

Well Services Group

WSG Coil Services bv

Phileas Foggstraat 65

NL-7825 AL EMMEN

The Netherlands

Phone +31 591 66 81 55

Fax +31 591 66 81 50

info@wellservices-group.com

www.wellservices-group.com

'best in class'